



CELEBRATING



YEARS!

**Every Child Safe,
Healthy and Connected**

Annual Report 2022-2023 • wisheschools.org



Annual Report 2022-2023 • wisheschools.org



Celebrating 10 Years

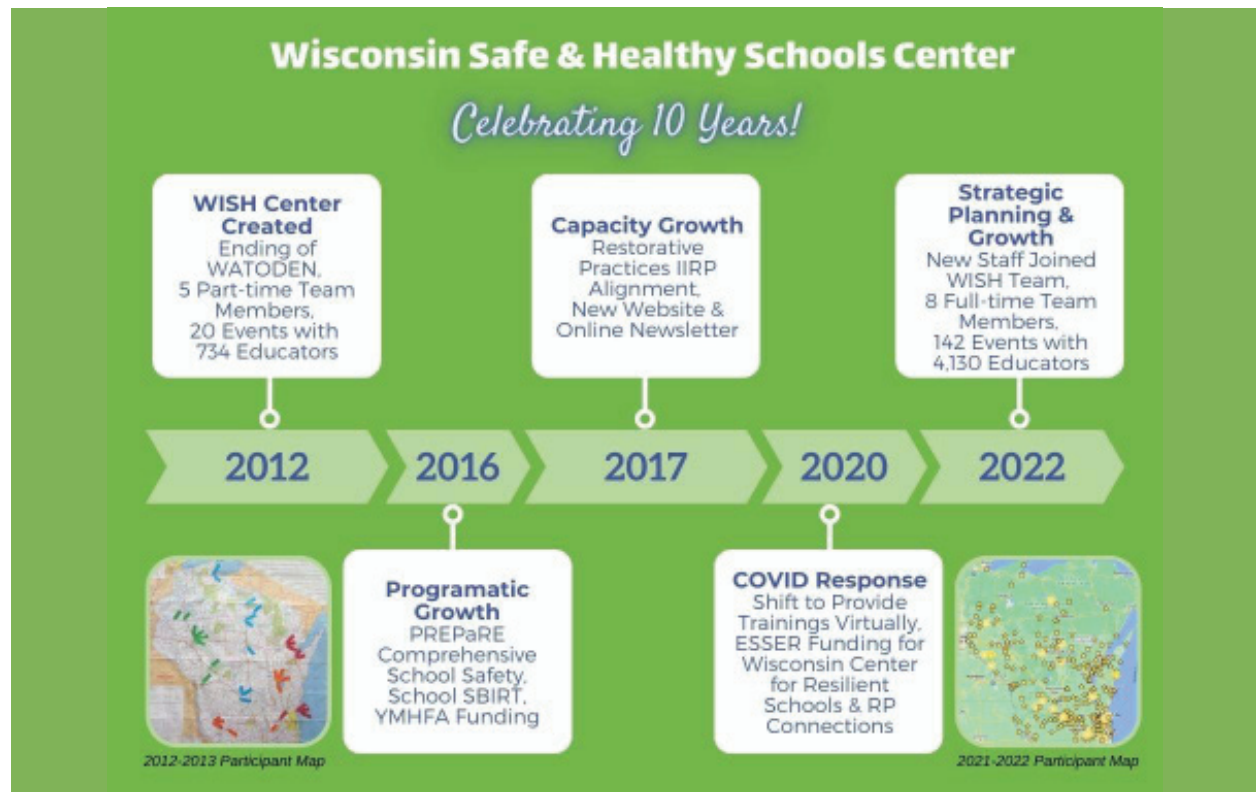
A Brief History of the Wisconsin Safe and Healthy Schools Center

The Wisconsin Safe & Healthy Schools Center was created in 2012 and included five part-time team members tasked with facilitating 20 training events to meet the professional



learning needs of Wisconsin educators in practices supporting safe and healthy schools. That year, the WISH Center served 734 educators. With changing state and federal funding, in partnership with the Wisconsin Department of Public Instruction, the WISH Center grew its capacity for training in key areas, including Restorative Practices, Youth Mental Health First Aid, and its capacity to provide as needed resources to the field through a website and newsletter.

In 2020, the Covid-19 pandemic shifted all WISH Center work to virtual, and short term ESSER funding helped the WISH Center create two major projects for two years: the Wisconsin Center for Resilient Schools, which provided coaching for districts implementing comprehensive mental health and social emotional learning, as well as RP Connections, which provided coaching and implementation support for restorative practices in schools. In 2021-2022, the WISH team included eight full time staff, and hosted 142 events serving 4,130 educators. At the conclusion of the 2022-23 school year, the WISH Center has engaged with 4,702 educators from 305 public school districts, 12 private schools, and 85 organizations and individuals.



WISH Center Professional Learning 2022-2023

4,702 total participants attended WISH Center trainings and events from **305 public school** districts, **12 private schools**, and **85 organizations and individuals**. A variety of virtual and in-person learning opportunities were held, including DBT Steps-A, Restorative Practices, Compassion Resilience, Anti-Human Trafficking, and Youth Mental Health First Aid. The WISH Center held Communities of Practice sessions in several focus areas to support schools in ongoing learning and implementation.

Regional and Statewide Professional Learning

Based on results from its [annual needs assessment](#) of the field, in the 2022-23 school year the WISH Center has provided regional and statewide training, technical assistance and resources in the following areas:

Restorative Practices

194 individuals participated in nine Restorative Practices trainings provided virtually and in person at multiple CESAs and at Mid-State Technical College in Stevens Point.

130 people participated in four virtual Community of Practice sessions. We have added **16** new Restorative Practices trainers from **13 school districts** by coordinating two Training of Trainers opportunities with the International Institute of Restorative Practices.

School SBIRT Implementation Project

92 schools participated in the School SBIRT (Screening Brief Intervention Referral to Treatment) Project. Three hybrid training sessions facilitated learning for new school practitioners. Two booster sessions and three communities of practice were held to increase learning and implementation of the brief intervention. Schools participating in this project collected data that was used to create an evaluation and implementation report, [shared on our School SBIRT webpage](#).

Youth Mental Health First Aid Training

42 Youth Mental Health First Aid (YMHFA) training sessions were held for **709 participants** in schools and communities throughout Wisconsin. In addition, **three communities of practice** were held to support statewide YMHFA instructors on increasing relevance, responding to self-disclosure, and maintaining scope of YMHFA training. **Four trainings of trainers** were held to increase the capacity of individuals to provide training on Youth Mental Health First Aid.

Trauma Sensitive Schools/Comprehensive School Mental Health Framework

In partnership with the Wisconsin Department of Public Instruction and CESAs, the WISH Center facilitated a Trauma Sensitive Schools CESA leadership development training and two virtual learning events for schools related to trauma sensitive schools practices. The WISH Director, Regional and Statewide Coordinators and 15 Leads from all 12 CESAs participated in the AWSA Mental Health Academy. The Academy, which supported implementation of Comprehensive School Mental Health systems, met for three full days in person and included additional learning through coaching and implementation support provided by DPI and one WISH Regional Coordinator.

Here's what participants in WISH Center trainings like most about our events:

"More tools & strategies for working with students."

"Flexible and responsive to group needs."

Compassion Resilience

The WISH Center, in partnership with the Wisconsin Department of Public Instruction and Rogers Community Learning and Engagement, provided training and technical assistance for schools and districts implementing the Compassion Resilience Toolkit. **90 educators** participated in the virtual Training of Facilitators and **45** continued learning and implementation in **three Community of Practice sessions**.

DBT Steps-A in Schools

The WISH Center provides an introduction to the DBT (Dialectical Behavior Therapy) Steps-A curriculum along with implementation support for schools and districts using the curriculum. **56 educators** participated in an overview of the DBT Steps-A curriculum, and **120 individuals** took advantage of **six Community of Practice sessions**.

Bullying Prevention

The WISH Center team collaborated with the Wisconsin Department of Public Instruction to create the [Bullying Prevention Toolkit](#) based on the work of Dr. Chad Rose and the Bully Prevention Lab at the University of Missouri.

The WISH Center engaged **295 participants** in learning about bullying prevention and the Bullying Prevention Toolkit through a webinar featuring Dr. Chad Rose, three statewide conference presentations and five presentations to participants in **four CESAs**, as well as by offering a walkthrough explanatory video about the toolkit that is posted on the WISH website. Any educators requesting technical assistance or support are provided with a link to request support in using the toolkit.

Substance Use Prevention and Intervention

The WISH Center created a [Guide for Schools to Address Prevention and Intervention of Substance Use](#). The guide was released in June of 2023, and helps schools addressing substance use to:

- Understand emerging substance use trends, issues and interventions.
- Evaluate resources, align them with existing resources and select appropriate best practices for prevention and intervention

Suicide Prevention

Beginning on January 1, 2023, the WISH Center received funding to provide technical assistance on suicide prevention in schools. **13 schools** participated in live office hours receiving information on peer-to-peer prevention programs, staff training, risk assessment, comprehensive programming, and resources for families.

The WISH Center also presented at the Prevent Suicide Wisconsin Conference to **82 conference attendees**.

PREPaRE

The WISH Center provided training in the PREPaRE School Safety and Preparedness Curriculum from the National Association of School Psychologists. **13 educators from two districts** attended this training event at CESA 9 in the northern part of the state.

Social Emotional Learning


60 educators from 34 school districts participated in the social emotional learning self-paced courses developed by DPI and coordinated by the WISH Center.


Here's what participants in WISH Center trainings like most about our events:

"The active and engaging way we were encouraged to work with the content we were learning. Highly experiential."

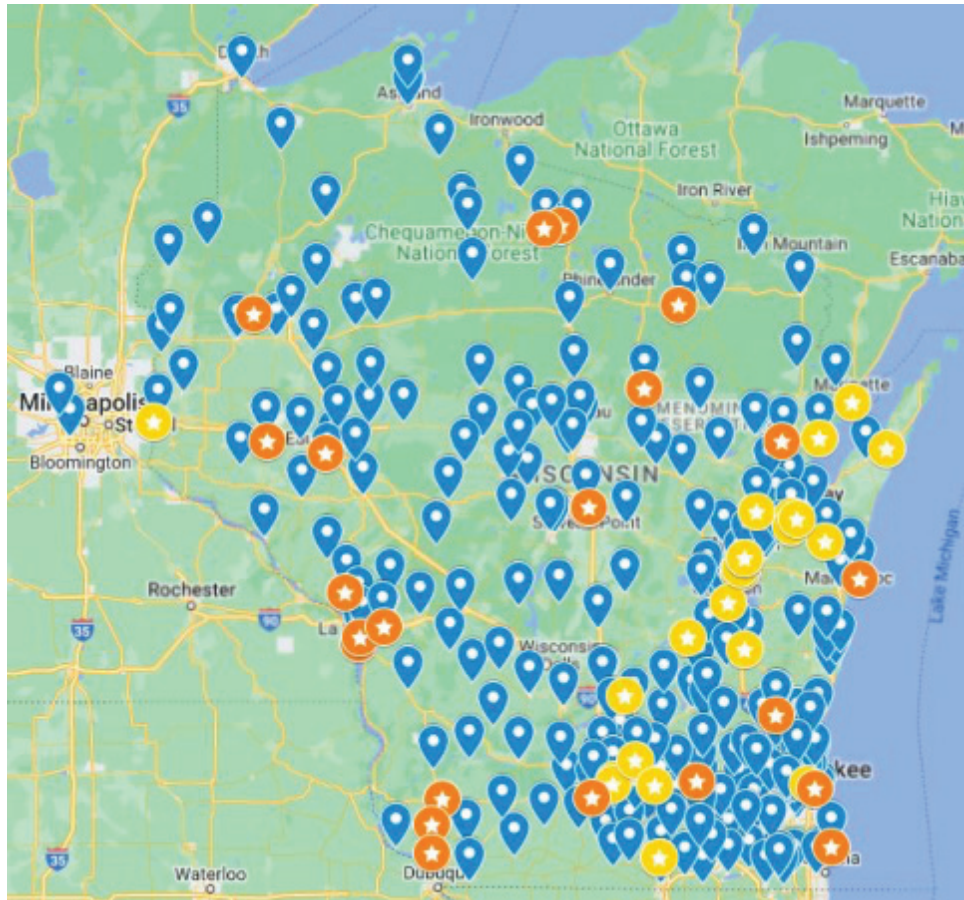
"The content was relevant and can be used immediately."

WISH Participants by Location

 A public school, private school, or organization that attended a WISH Center event in 2022-2023.

 Youth Mental Health First Aid Trainings

 New Youth Mental Health First Aid Trainers



In-District and Direct Service Trainings

The WISH Center supported **11 districts** from CESAs 4, 6, 7, 9, 10 and 11 in Restorative Practices for Educators, Formal Conferencing, and Coaching for Implementation.

The Department of Justice’s Office of School Safety sponsored PREPaRE Workshop 1 and 2 training at CESA 9 for **33 participants** who serve on a critical incident response team.

Sources of Strength training events were provided for adult advisors and youth peer leaders from **5 school districts** and involved **111 adult advisors** and **176 youth leaders**.

Here’s what participants in WISH Center trainings like most about our events:

“The knowledge of the instructors produced a trust of the process that allowed the participants to engage freely in their learning and practicing.”

“This was fantastic. It was so informative and I loved being able to practice and have so many ideas to implement back in our district on different levels.”



In collaboration and funding partnership with the Department of Public Instruction, the WISH Center offers the Annual Building the Heart of Successful Schools Conference to present national and state level speakers and to showcase local practitioners supporting safe and healthy schools.

291 educators attended the annual Building the Heart of Successful Schools Conference held on December 8, 2022. **260 educators** participated in Pre-Conference learning sessions on December 7, 2022. Participants came from **29 school districts** and **14 organizations**. Of the districts attending:

- **66% were rural or town districts**
- **18% were suburban**
- **13% represented small or mid-sized cities**
- **2% were from large cities**

Conference access was increased by recording six sessions and sharing with participants and those who registered for recorded access. By the end of June of 2023, these recordings had been viewed a total of **142** times. View the [2022 BHSS Recap Video](#) for more information.

Topics included:

- **Four** Pre Conference Presentations:
 - Understanding and Supporting Gender Diverse Students
 - School Safety Begins with Identity
 - Advancing Compassion Resilience: Cultivating Healthy School Environments
 - Health Equity
- **Two Keynote Addresses** by national speaker Mike Veny:
 - Transforming Stigma in the Classroom
 - How to Find Inner Peace in Times of Uncertainty
- **Nine Conference Sectionals:**
 - "What if...?": Supporting, Advocating and Teaching Students with Anxiety and Depression-Related Challenges
 - Growing Relationships and Nurturing Trust: Transformative School and Community Partnerships
 - Knight Skills: Universal Social-Emotional Learning at the High School Level
 - MAKE IT ABOUT ME: Building Self-Care Awareness and Personalized Goal-Setting in Middle School
 - Managing Media Madness
 - LGBTQ+ Youth in Crisis: Best Practices
 - Commercial Tobacco & Vaping Prevention and Intervention - Panel Discussion
 - Bullying Prevention Toolkit

Contributions of Collaborative Partners

Partnership and funding for the WISH Center projects is provided primarily by the Wisconsin Department of Public Instruction, with direct support by members of the Student Services/Prevention and Wellness Team, led by Susan Piazza, Brenda Jennings and Emily Holder. In addition, projects, training, and implementation support were realized because of the collective contributions of a diverse group of partners, including state agencies, CESAs, local schools, organizations, and individuals who bring unique perspectives to our work.

The WISH Center acknowledges all who collaborated with us and extended our capacity to reach more schools and educators.

Building the Heart of Successful Schools Conference Presenters and Contributors

Milaney Levenson, Collaborative Organizational Revitalization for Equity (CORE) - CESA 10
Kent Smith, Collaborative Organizational Revitalization for Equity (CORE)- CESA 10
Tacara Lovings, Wisconsin DPI
Amy Mathison, Wisconsin DPI
Teale Greylord, Wisconsin Department of Health Services
Todd Savage, UW-River Falls
Hanna Maechtle, Rogers Community Learning and Engagement & WISE
Monica Caldwell, Wisconsin DPI
Katharine Reid, Wisconsin Safe and Healthy Schools Center
Ashley Duda, Kaukauna School District
Kristin Charneski, Kaukauna School District
Madeline Conrad, CESA 9
Julia Korban, Oak Creek Franklin-Joint School District
Emilie Tregallas, Oak Creek Franklin-Joint School District
Jackie Schoening, Wisconsin Safe and Healthy Schools Center
Libby Strunz, Wisconsin DPI
Tammy Cooley, Potosi School District
Tiffany Helmke, Potosi School District
Julia Richter, Choose Love CARES
Heather Chun, RCC Sexual Violence Resource Center
Adriana Plach, Pewaukee School District
Allison Bucheger - Community Health
Luke Witkowski - Wisconsin DPI
Molly Herrmann, Wisconsin DPI
Hinckley Productions

Regional and Statewide Presenters / Consultants

Julie Incitti, Wisconsin DPI
Asia Jackson, Wisconsin Department of Children and Families
Jessica Goodman Schutz, Milwaukee Public Schools
Claudine O'Leary, Rethink Resources
Rebekah Dettman, Milwaukee Child Advocacy Center
Dr. Chad Rose, Mizzou Ed Bully Prevention Lab
Emily Jonesberg, Rogers Community Learning and Engagement and WISE
Trisha Kilpin, Wisconsin Department of Justice, Office of School Safety
Kelly DeJonge, Wisconsin Department of Justice, Office of School Safety
Christine Kleiman - WISH Center Training Partner
Carol Bahrke - WISH Center Training Partner
Chelsea Bellville - WISH Center Training Partner
Cindy Mitchell - WISH Center Training Partner
International Institute for Restorative Practices
Dr. Amy Starzecki, School District of Superior
Kristin Regas, School District of Superior
Scott Caldwell, Wisconsin Department of Health Services
Kerry Lawton, Wisconsin DPI
Association of Wisconsin School Administrators (AWSA) Mental Health Academy
Dr. Caelan Soma, Starr Commonwealth
Katie Berg, CESA 1
Chris Wardlow, Catalpa Health + Outagamie County
Karen Wegge, DC Everest School District
Erin Jacobson, DC Everest School District
Brian Juchems, GSAFE
Bwaakoningwiid David J. O'Connor, Wisconsin DPI
Lighthouse Wellness and Health Education Consulting
Kathy Markeland, Coalition for Advancing School-based Mental Health
Elizabeth Connors, Yale School of Medicine
Wisconsin Family Ties



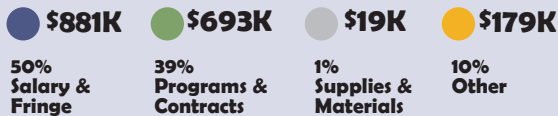
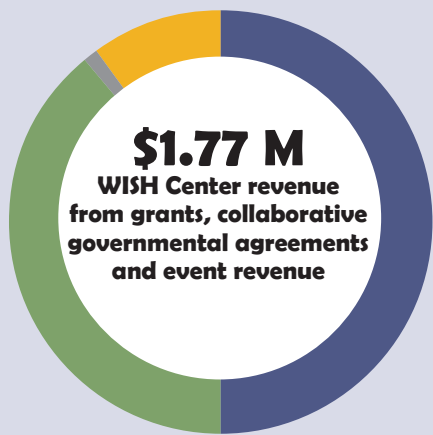
CESA Trauma Sensitive Schools/ Comprehensive School Mental Health Leads

Sara Drewniak, CESA 1
Colby Straus and Jamie Syvrud, CESA 2
Niki Smith, CESA 3
Jenny Riggle and Kelly Demers, CESA 4
Chris Boettcher and Sara Kettleson, CESA 5
Erin Davenport, CESA 6
Marci Waldron-Kuhn, CESA 7
Jana Garl, CESA 8
Angie Pliska, CESA 9
Kim Hill, CESA 10
Erin Baillargeon, CESA 11
Amanda Trautt, CESA 12

Youth Mental Health First Aid Training Partners

National Council for Mental Wellbeing
Dr. Soumya Palreddy, National Trainer
Jill Kluesner, National Trainer
Lacey Rosenbaum, National Trainer
Theresa Barnett, YMHFA Trainer
Jenna Zuelke, YMHFA Trainer
Tiffany Vogel, YMHFA Trainer
Lindsey Reckelberg, YMHFA Trainer
Angela Bielinski, YMHFA Trainer
Megan Diedrick, YMHFA Trainer
Lisa Bellile, YMHFA Trainer
Christine Christensen, YMHFA Trainer
Jamie Lasee, YMHFA Trainer
Lisa Goldsberry, YMHFA Trainer
Kris Ravet, YMHFA Trainer
Stephanie Nault, YMHFA Trainer
Cindy Czarnik-Neimeyer, YMHFA Trainer
Tracy Aliota, YMHFA Trainer
Alyson Sauter, YMHFA Trainer
Cassie McGuire, YMHFA Trainer
Kathy DesRochers, YMHFA Trainer
Carlyn Andrew, YMHFA Trainer
Prencia Clifton, YMHFA Trainer
Jane DePrey, YMHFA Trainer
Jake Czarnik-Neimeyer, YMHFA Trainer

2022-2023 Financials



2022-2023 WISH Team

Tracy Herlitzke
Director

Alissa Darin
Regional Coordinator

Alie Hubing
Project Coordinator

Kalli Rasmussen
Communications and Project Coordinator

Katharine Reid
Statewide Project Coordinator

Jackie Schoening
Regional Coordinator

Lynn Verage
Regional Coordinator

Carol Zabel
Regional Coordinator



Mission

We grow the capacity of educators to positively impact the well-being and equitable outcomes of every student.

Vision

Every Child Safe, Healthy and Connected

Partnership and funding provided by the Wisconsin Department of Public Instruction.

wisheschools.org